

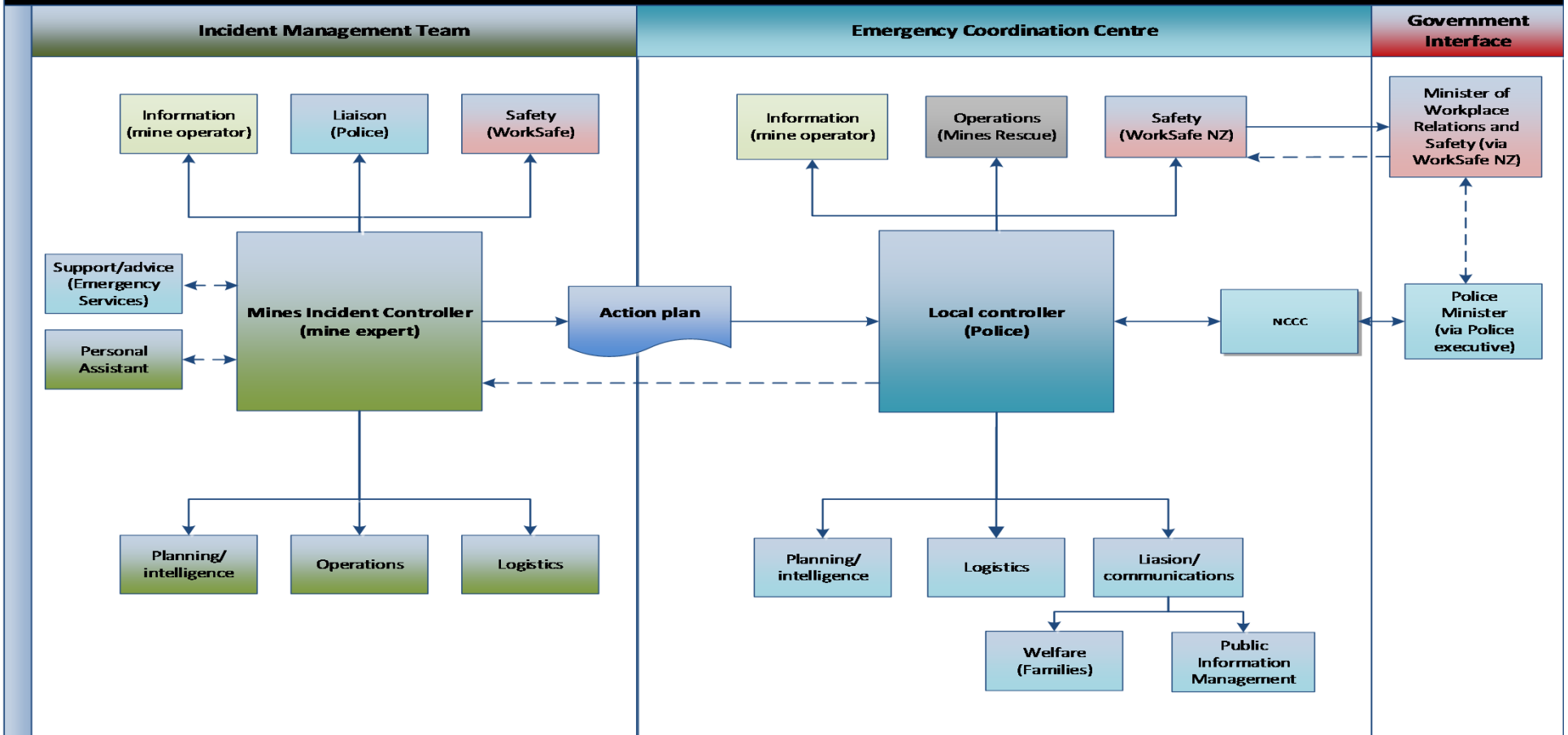
# NEW ZEALAND UNDERGROUND MINES EMERGENCY PROTOCOL



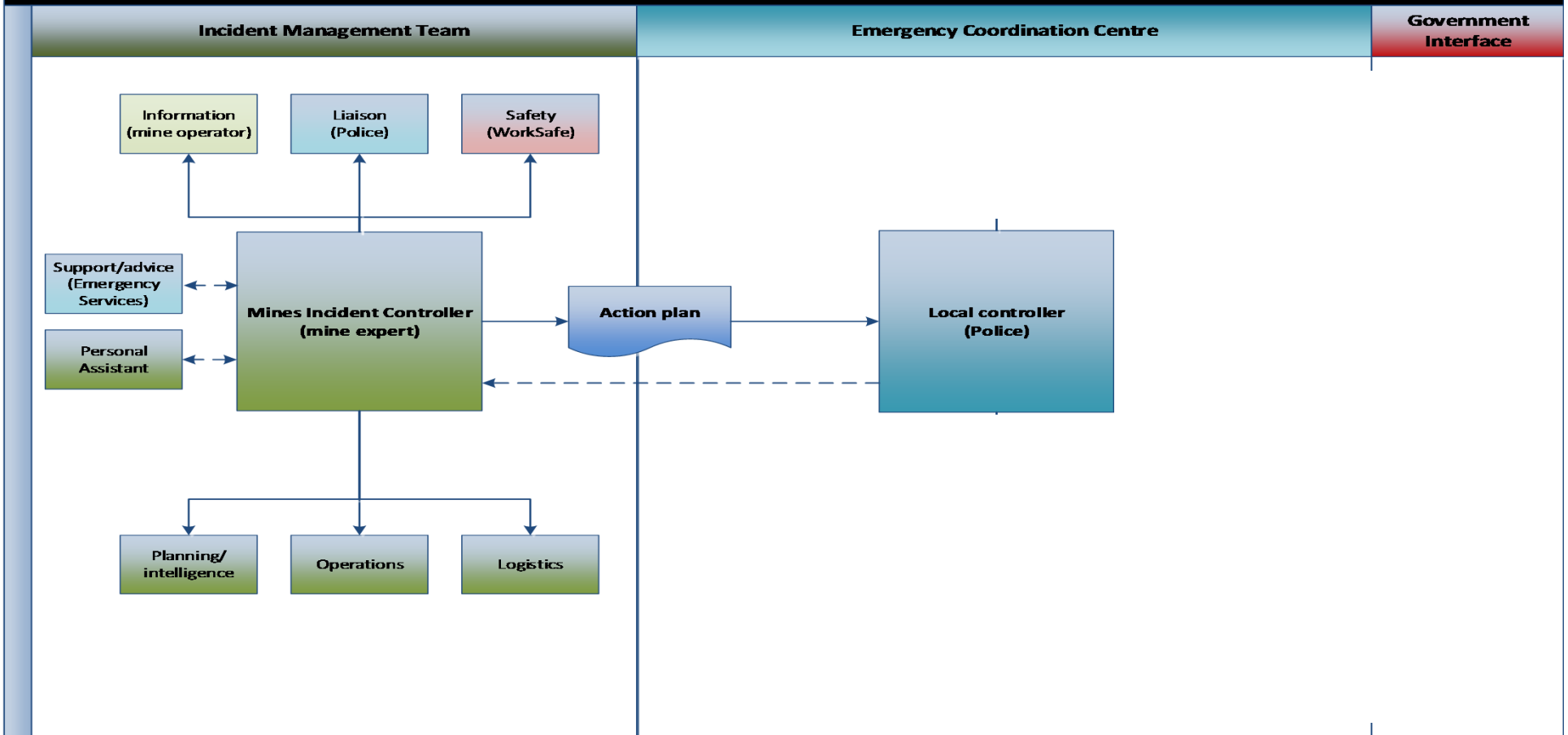
# **NEW ZEALAND UNDERGROUND MINES EMERGENCY PROTOCOL**

- **A multi-agency policy for managing underground mine emergencies in New Zealand**
- **Aligned to established incident management principles**
- **Provides direction for managing a major level incident**
- **Established roles and responsibilities for stakeholders**
- **Clear lines of authority for decision making and communication**
- **Mines Incident Controller mining expert and qualified for role**

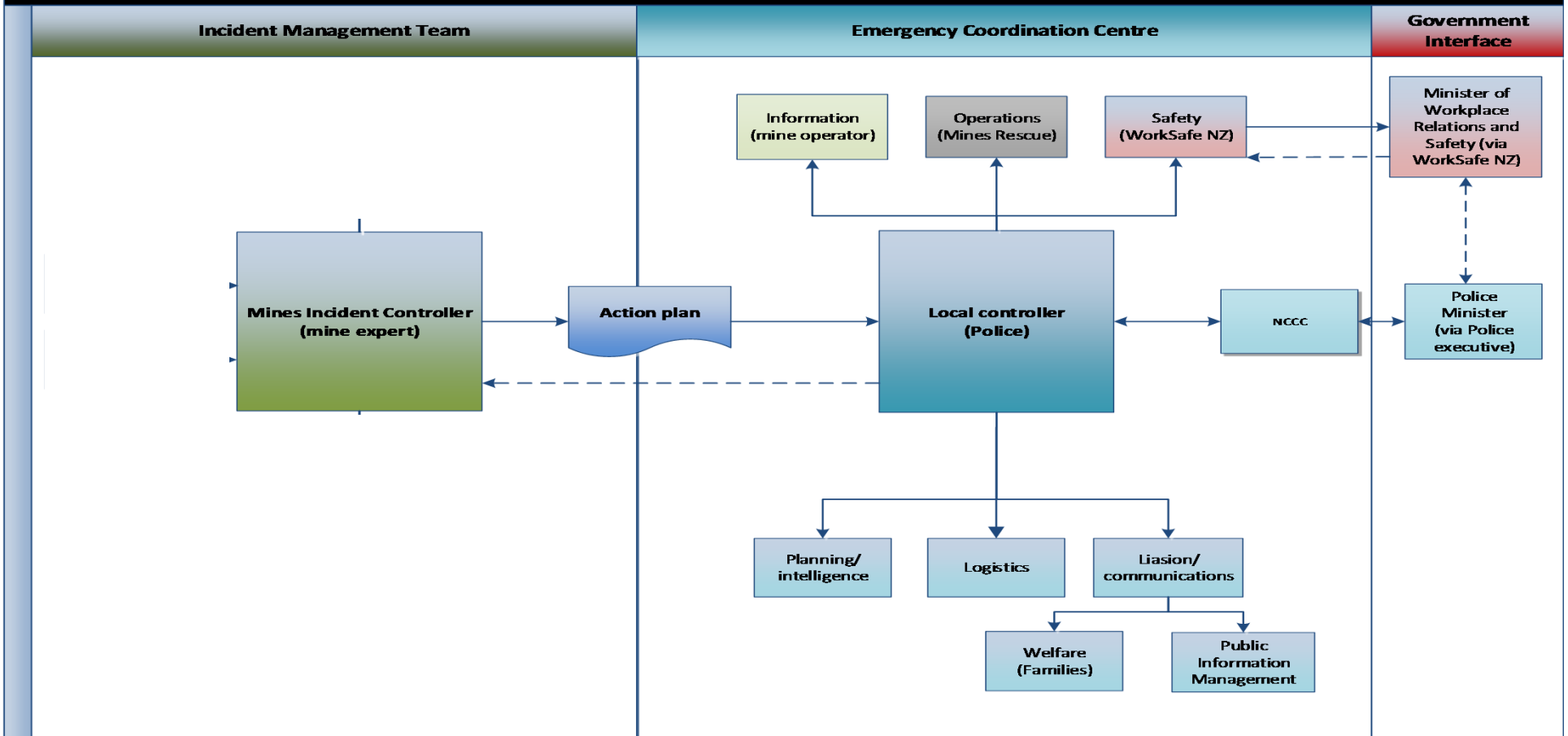
# Underground Mines Emergency Protocol



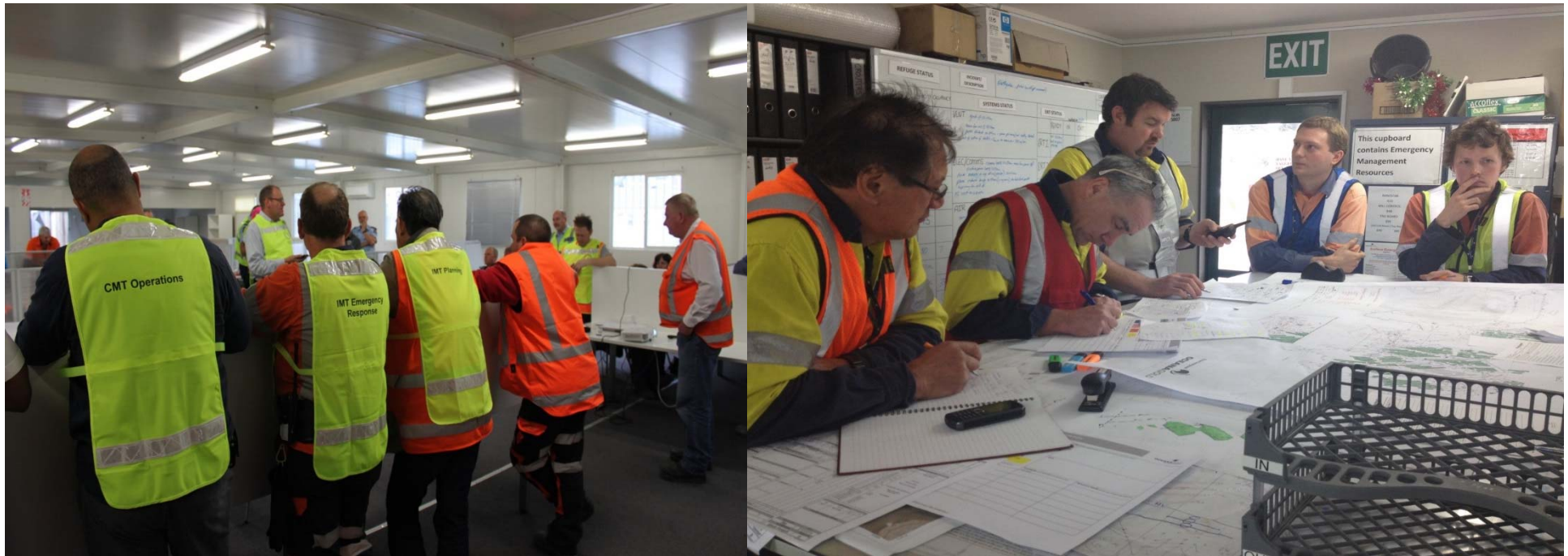
# Underground Mines Emergency Protocol



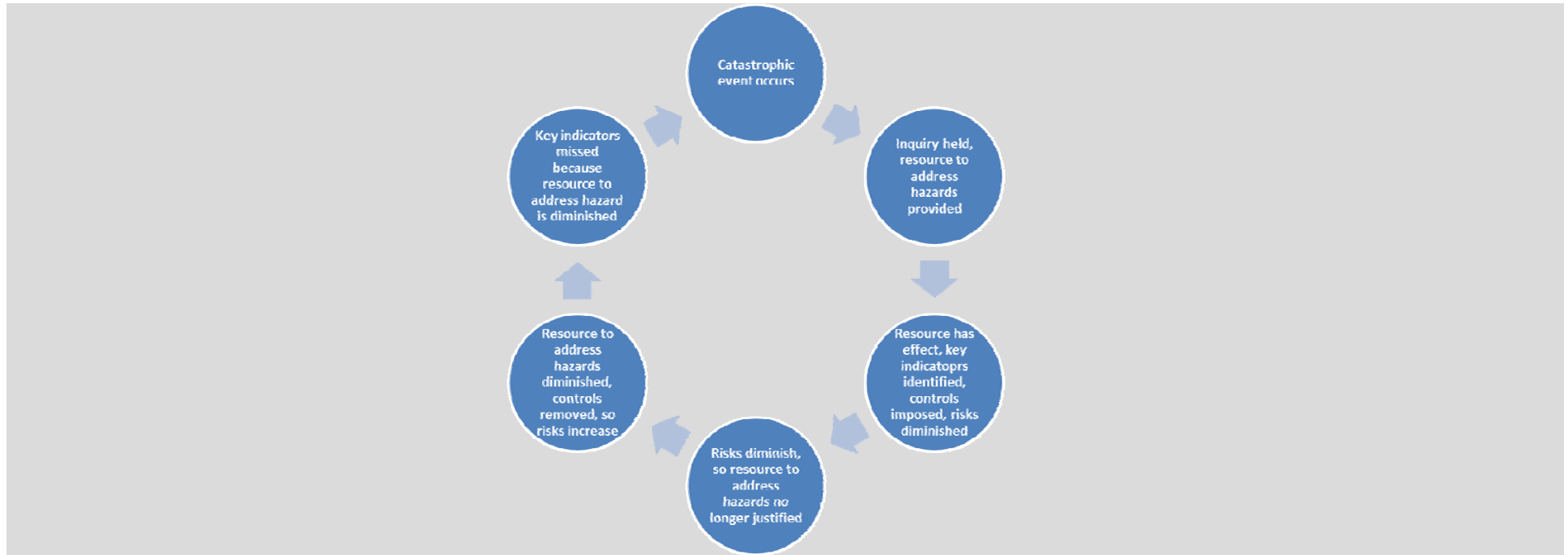
# Underground Mines Emergency Protocol



# PROTOCOL TESTING



# CYCLE OF DISASTER



# POLICY DECISIONS - KEY FACTORS

- Royal Commission on the Pike River Coal Mine Tragedy
- Inter-agency consultation (negotiation process)
- Public and industry consultation
- Practical testing



# MINE INCIDENT CONTROLLER POSITION – VIABILITY



- Training
- Health, safety and wellbeing
- Payment for work
- Continuing professional development
- Maintaining the database

# WORKSAFE INSPECTORATE

- Two key roles in the management of large scale emergencies
- Provide expertise in mining and health and safety to Police in Emergency Coordination Centre
- Appoint and oversee performance of the MIC - replace if performance is poor
- Fill role of Safety Officer in Incident Management Team



# QUESTIONS?



# EVERYONE WHO GOES TO WORK COMES HOME HEALTHY AND SAFE



New Zealand Government

**WORKSAFE**  
NEW ZEALAND | MAHI HAUMARU  
AOTEAROA